

## Branko Brezovec: 'So So'

Venue: City Hotel, 12 Osborn Street, E1.  
1 minute walk from Aldgate East Tube

**5-7 November 7pm & 9pm. 1hr duration**

Witness the UK Premiere of a brand new work by one of Europe's leading iconoclasts in an East London Hotel

Croatian theatre director **Branko Brezovec's** innovative approach combines different texts, cultures, contexts and languages.

Created by the French Compagnie des Loups and Gustl of Croatia, *So So* is based on the texts and photography of internationally renowned visual artist **Sophie Calle**

which she produced while working as a hotel chambermaid. She meticulously recorded the movements of the guests and in their absence investigated their most personal possessions, to piece together their private lives.

These records of daily reality provide the tools for the three actors in *So So*, who move beyond Calle's texts in an attempt to rebuild an image of a woman who realises her own self portrait through the reference points provided by others.

Capacity is strictly limited and all tickets must be booked in advance through the ICA Box Office.

*See also page 12 for screenings of Sophie Calle's Double Blind*

## Station House Opera: 'Roadmetal Sweetbread'

Nash Room

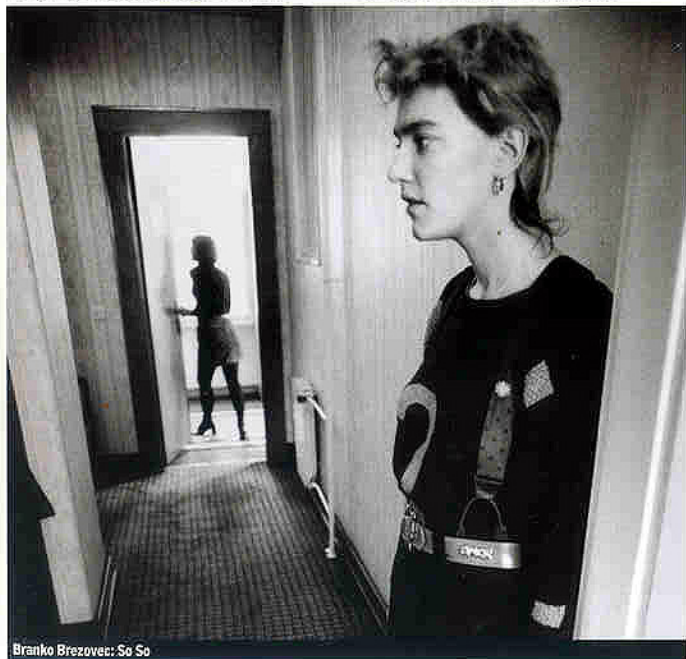
**14 & 15, 21 & 22, 28 & 29 November  
7.30 & 9.30pm**

'As stunningly visual as it is visionary'  
*Glasgow Herald*

'One of the most important performance groups anywhere ... a unique vision articulated through a genuinely theatrical language' *Performance magazine*

In *Roadmetal Sweetbread* live performance and pre-recorded action are given equal weight. The intimate setting of the ICA's Nash room becomes the scene for a spectacular exploration of a relationship between two people. Projected life-size against the wall, the performers' video images compete with their live counterparts for attention and authenticity. The space becomes populated with ghosts and doppelgängers who interact with the performers to devastating effect - sometimes comic, sometimes malign.

**Station House Opera** have been producing internationally respected performance work for over 18 years, working in locations as diverse as New York's Brooklyn Bridge and Dresden's historic Frauenkirche.



Branko Brezovec: *So So*

**Branko Brezovec: So So**  
E14/E16 ICA Members & concessions. Tickets must be booked in advance through the ICA Box Office

Supported by Conseils Regional and General de la Région PACA, Croatian Ministry of Culture and the City of Zagreb

With financial assistance from Visiting Arts. Presented in collaboration with Chapter Theatre, Cardiff



**Station House Opera:**  
E8/E6 ICA Members & concessions

An ICA Live Arts Commission in association with Artsadmin